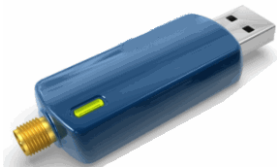


## Wireless-N 500mW High Power 2.4GHz USB Adapter 150Mbps w/SMA Connector

### *WLU-2415H*



**WLU-2415H**

The WLU-2415H is a Nano size of 500mW radio high power wireless USB 2.0 adapter that supports IEEE 802.11b/g/n (2.4GHz). It provides a high-speed wireless connection with longest range. It has SMA connector that allows you to connect with external higher gain antenna. To protect your wireless connectivity, the high-speed wireless USB adapter can encrypt all wireless transmissions through industrial strength 64/128-bit WEP, WPA / WPA2, and TKIP-AES data encryption helps keep your communications and information private. With this high-speed wireless USB adapter, you will experience the best wireless connectivity available.

This is a conveniently compact and portable adapter that plugs into your laptop's USB port. Step-by-step Setup Wizard makes it easy to configure to your network's settings. It supports 802.11e standard Quality of Service support (QoS) for wireless multimedia enhancements. The LED indicator displays the current signal strength which helps you to find the best location to connect easily. Connecting to a wireless network is a breeze with automated Wi-Fi Protected Setup. Advanced wireless encryption ensures the highest data security. Wireless Multi Media (WMM) Quality of Service technology prioritizes streaming video, wireless gaming and online calls.

#### Features:

- High-speed 2.4GHz 802.11 b/g Wireless-N
- 500mW high power radio for very long range networking for your desktop or notebook PC
- MIMO technology uses multiple radios to create a robust signal that travels farther and reduces dead spots
- Standard 5 dBi SMA antennas for total up to 0.964 Watt for very long range support
- Software AP function allows you to create WiFi hotspot from your mobile computers.
- Supports up to 128-bit encryption with WPA / WPA2 / TKIP-AES.
- Support WPA/WPA2-Personal, WPA/WPA2-Enterprise
- USB 2.0 interface with 1.1 compatible
- Easy to use Setup Wizard
- Extended range and wireless roaming
- Connects at a 150Mbps via USB 2.0, up to 8 times faster than a USB 1.1 adapter
- Providing SMA connector for high Gain antenna
- Nano size for greater flexibility
- Set wizard for fast configuration
- QoS with Wireless Multi Media (WMM)
- WPS hardware and software push button
- 802.11d for additional regulatory domains
- RTS & Fragment Threshold support
- Compatible with Microsoft Windows 7, XP, Vista, and 2000. MAC OS 10.4/10.5
- Japan Mid Band
- Ad-Hoc mode to connect with other cards for peer-to-file sharing or infrastructure mode.
- WoW and dual-core gaming
- Software AP function supported

## Wireless-N 500mW 802.11 b/g/n 1T1R 150Mbps USB Adapter

<b>Interface</b>	USB 2.0 standard, USB 1.1 compliant
<b>Model Number</b>	WLU-2415H
<b>Standard Conformance</b>	IEEE802.11 802.11b/g/n compliant IEEE802.11d, 802.11e, 802.11h, 802.11i compliant
<b>Data Transfer Rate</b>	IEEE802.11b: 1 / 2 / 5.5 / 11Mbps (auto sensing) IEEE802.11g: 6 / 9 / 12 / 18 / 24 / 36 / 48 / 54Mbps (auto sensing) Wireless N: 150Mbps (TX) /150Mbps (RX)
<b>Access Method</b>	AP-client, software AP, Infrastructure Mode, Ad-Hoc mode (802.11 Ad-Hoc), roaming
<b>TX/RX</b>	1 TX 1RX
<b>Operation Functions</b>	Power Saving, WMM MAC address filter(Access or Reject list) Support ICS setting on-Win XP, Vista, Win7 Software AP on Windows XP, Vista, Win7
<b>Quality of Service (QOS)</b>	802.11e , WMM
<b>International Regulation</b>	802.11d
<b>Security</b>	WEP 64/128 bits,TKIP/802.11i, AES-CCMP, WPA-PSK, WPA2-PSK, 802.1x, EAP-TLS, EAP-TTLS,PEAP-TL, PEAP(EAP-GTC), PEAP (EAP-MSCHAPv2), WPS. WPA/WPA2-Personal, WPA/WPA2-Enterprise
<b>Frequency Range</b>	IEEE802.11b: 2.4 to 2.497GHz IEEE802.11g: 2.4 to 2.4835GHz IEEE802.11n (draft compliance): 2.4GHz
<b>Wireless Medium</b>	OFDM & DSSS (with Barker coding and CCK for backward compatibility with 802.11b)
<b>Media Access Protocol</b>	Carrier Sense Multiple Access with Collision Avoidance (CSMA/CA)
<b>Bandwidth Channel</b>	20MHz / 40MHz
<b>Modulation Method</b>	DSSS with CCK,DQPSK,DBPSK OFDM with BPSK,QPSK,16QAM,64QAM
<b>Operating Channels</b>	1~11 (U.S. & Canada), 1~13 (channel availability depends on local regulations), 1~14 (Japan)
<b>Transmit Power</b>	500mW (radio). With 5dBi antenna for up to 0.964 Watt EIRP
<b>Receiver Sensitivity</b>	-95dBm / 1Mbps, -72dBm / 54Mbps,
<b>Antenna</b>	SMA connector, default 5dBi. optional 2/3/5/10 dBi omni-antenna
<b>LED Indicators</b>	Power / Link
<b>Operating systems</b>	Windows Vista 64/32, Windows 7/XP 64/32, Window 2000 MAC OS 10.4/10.5
<b>Operating Temperature</b>	32 °F ~ 131 °F (0 °C ~ 55 °C)
<b>Storage Temperature</b>	-13 °F ~ 158 °F (-20 °C ~ 70 °C)
<b>Operating Humidity</b>	10% to 80% Non-Condensing
<b>Storage Humidity</b>	5% to 90% Non-Condensing
<b>Dimension</b>	6.3 X 1.8 X 0.9 cm
<b>Weight</b>	25 grams

**Note:** With standard 1 USB port the power consumption is 5V @ 500mA supporting only up to 200mW for WLU-2415H. It is recommended to use a Y-cable utilizing 2 USB Ports to increase the power consumption to 5V @ 870mW thus allowing maximum support of 500mW for the WLU-2415H. These figures are based on theoretical analysis.



**USA Office:**  
4790 Irvine Blvd., Suite 105-458,  
Irvine, CA 92620  
Tel: 1-949-903-8502  
Fax: 1-949-252-0888

**Taiwan Office:**  
No.5, Qiyang Rd., Beitou District,  
Taipei City 112, Taiwan  
Tel: 886-2-2898-4050  
Fax: 886-2-2896-9157