

# WiBORNE, INC.

## Long Range Wireless Backhaul Antenna

### 32 dBi 5GHz High Data Rate Antenna for WISP



The Parabolic Dish Antenna systems offered by WiBorne are constructed of an aluminum alloy dish with powder coat paint finish for excellent mechanical, electrical and environmental performance. The parabolic reflector is made with a special one-step molding technology which achieves excellent consistency and long term stability. They come complete with universal galvanized steel, powder coat paint mounting system for pole mount applications. Because of its' superb electrical performance and mechanical stability, the parabolic dish antenna can be used in a wide variety of high performance 5GHz wireless applications. An optional Fiberglass Radome is available for added environmental protection.

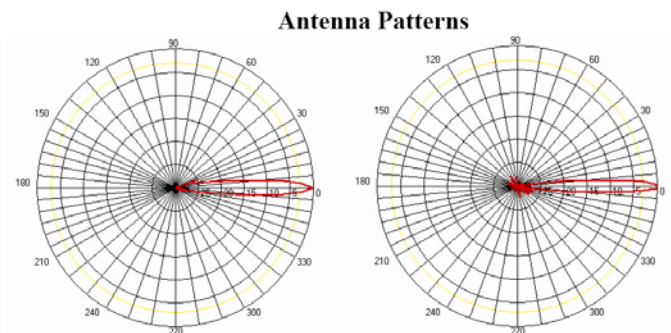
- Vertical or Horizontally Polarized
- High Gain 32 dBi Antenna
- Type N Female Connector
- Adjustable tilt Pole Mount
- Rugged and Weatherproof
- Ultra Low Wind Loading and Low Visual Impact
- DC Grounded for Lightning Protection

### General Specifications

Part Number	OA-5032 for 32 dBi 5GHz
Type	Special High Gain Directional Antenna
Product Narrative	High Gain, High Data Rate Noise-Reducing <i>Rejection of Interference</i> Geometric Spatial Capture of Signal
General Freq.(MHz)	5150 - 5850
Impedance	50 OHM
Available Gain(dBi)	32 dBi
Max. Input Power	100 Watts
H. Beamwidth	4 degree
Vert. Beamwidth	4 degree
Front to Back	38 dB
VSWR	1.5 : 1
Operating Temperature	-40 to +70 °C
Weight	22 lbs. ( 10 Kg )
Pole Diameter (OD)	1.5"~3.0" ( 38~76 mm)
Wind Load 100MPH	256 lbs
125MPH	400 lbs
w/Radome 100MPH	111 lbs
125MPH	173 lbs
Termination	Type N Female Integrated Connector
Dimension (Dia)	35.4" (900mm)

### Applications

- 5.8 GHz ISM Band Applications
- 5.3 GHz UNII Band Applications
- 802.11a Wireless Data
- Point to Point Long Distance Backhaul
- Building to Building High Speed Links



OA-5032 HPOL

OA-5032 VPOL